

THE CARLTON COURTHOUSE THEATRE

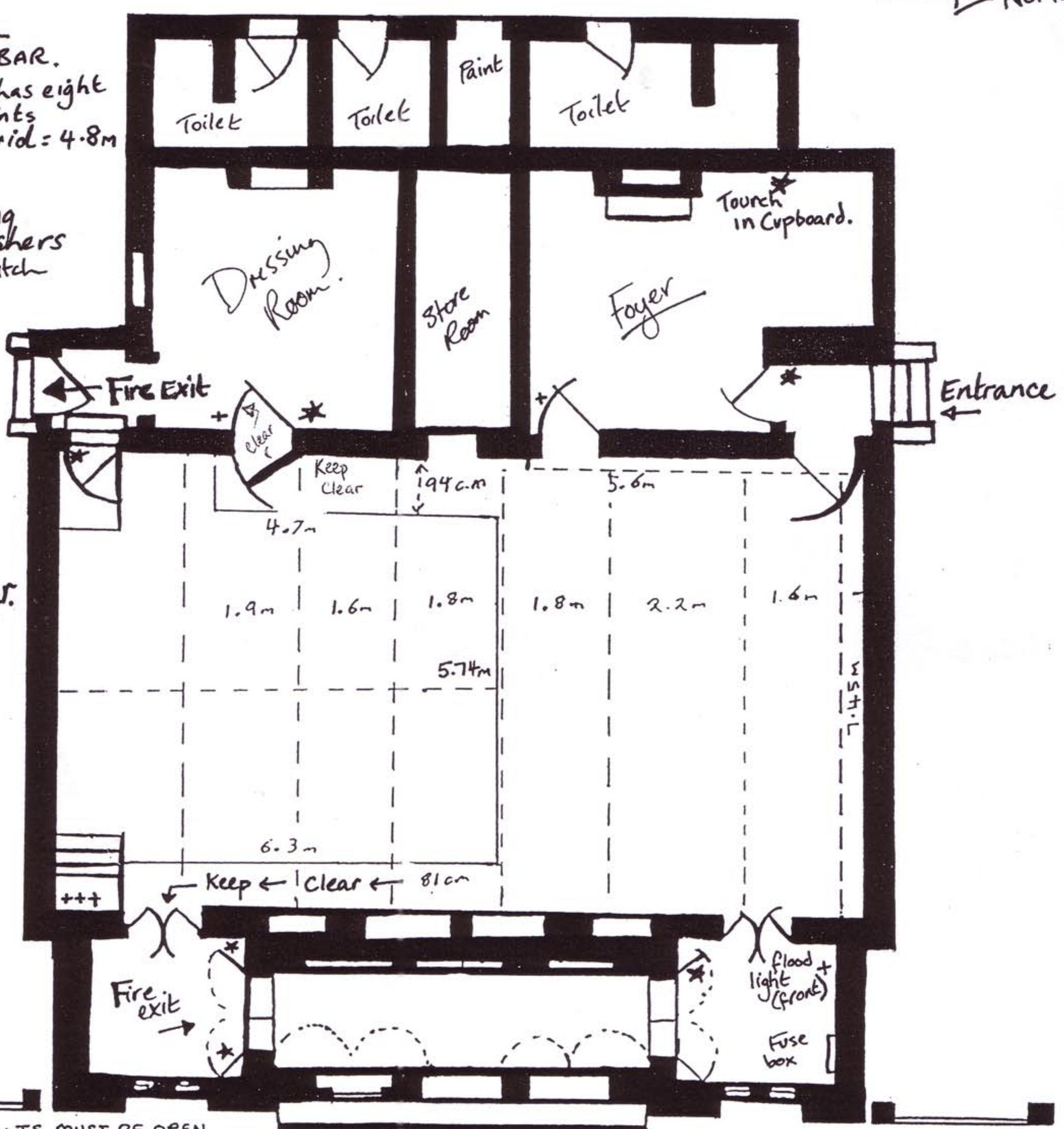


349 Drummond Street.

* These gates must be unlocked *
over the performance.

→ North

- LIGHTING BAR.
- Each bar has eight patch points
- Lighting grid = 4.8m
- * denotes fire exting. extinguishers
- + = light switch



3 BOLTS MUST BE OPEN DURING PERFORMANCE

